

# HAWES ST MARGARET

## Case Study

### SUMMARY OF WORKS

- Removal of existing draught lobby and south door
- New glazed accessible entrance doors
- Creation of large draught lobby in south west corner
- Installing one standard and one accessible toilet



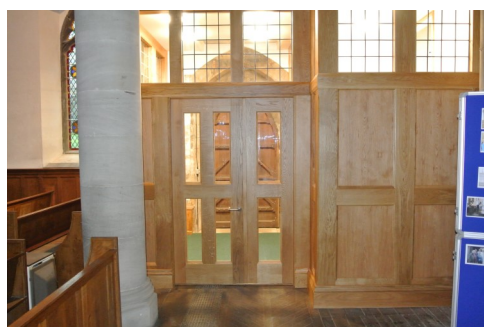
SW corner prior to works

The church is set in a prominent location in the popular tourist village of Hawes. It was built in 1850, to a design by architect A.B. Higham, in what is called the "Decorated Style" and contains fine stained glass windows designed in the 1870s by Mr G J Baguley of Newcastle in Tyne, a millennium window depicting aspects of Dales Life by Sep Waugh of York and pews hand carved by Thompson the "mouseman" of Kilburn.



Draught lobby, entrance and toilets

The Church did not have any toilet facilities inside the building or within a short a walking distance. This meant a few members of the congregation and visitors were unable to fully share in the worship and others were unable to attend any social activities before or after church services. It also affected the larger community, as the lack of toilet facilities prevented any form of social or fundraising events from taking place within the Church.



Draught lobby from nave

The introduction of the toilet facilities to St Margaret's has already had a considerable positive effect upon the life of the church. The parish has been able to provide new types of family friendly services for special festivals such as Mothering Sunday and Pentecost. The building has also been used for community events, such as concerts and recitals, including hosting the Yorkshire Philharmonic Choir as part of the Swaledale Festival.

Grade II Listed

Architect: Elaine Blackett-Ord

Works completed: 2016